

BECKER ORTHOPEDIC SPINAL SYSTEM HYPEREXTENSION TLSO'S

The Becker Orthopedic Spinal System (BOSS) is a series of modular hyperextension braces utilizing serrated discs on the lateral uprights to make angular adjustments of the thoracic and pelvic modules.

MODEL Q-25A HYPEREXTENSION TLSO WITH SWIVEL STERNAL PAD & QUICK RELEASE CLOSURE

Model Q-25A consists of an anterior thoracic and pelvic assembly, each of which is attached to serrated discs on the superior and inferior margins of the lateral uprights. The lateral uprights are padded and adjustable in length. A posterior thoracolumbar pad is attached to the lateral uprights by our Quick Release closure system.



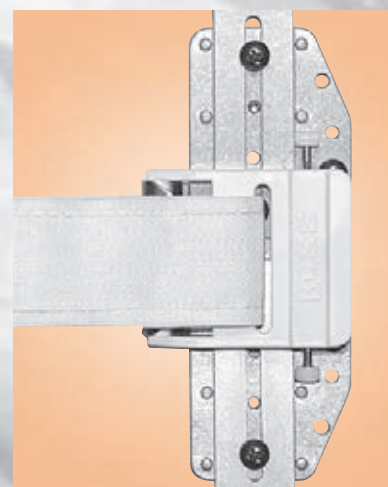
Order No.	Size
Q-25A-XS	X-Small
Q-25A-S	Small
Q-25A-M	Medium
Q-25A-L	Large
Q-25A-XL	X-Large
Q-25-C	Custom



Swivel Sternal Pad



Adjustable Lateral Uprights



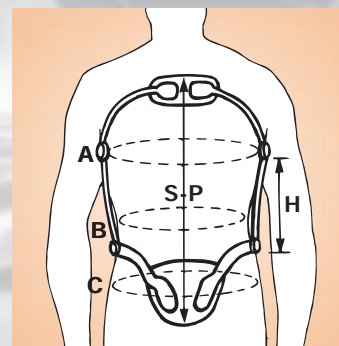
Quick Release Closure

NOTE: Our hyperextension TLSO's with Quick Release closures are not available with non-adjustable lateral uprights.

SIZE CHART

Size	A	B	C	H	S-P
X-Small	28" - 30"	25" - 28"	28" - 31"	4-3/8" - 7-1/4"	16" - 17"
Small	30" - 33"	28" - 31"	31" - 34"	4-3/8" - 7-1/4"	17" - 18"
Medium	33" - 36"	31" - 34"	34" - 37"	6" - 8-1/4"	18" - 20"
Large	36" - 40"	34" - 37"	37" - 40"	6-5/8" - 9-3/4"	19" - 21"
X-Large	40" - 44"	37" - 40"	40" - 44"	6-5/8" - 9-3/4"	20" - 22"
Custom	Please Specify Measurements				

NOTE: The superior border of the sternal pad should be located 1/2" below the sternal notch. The inferior border of the suprapubic pad should be 1/2" superior to the symphysis pubis.



MODEL L-25A

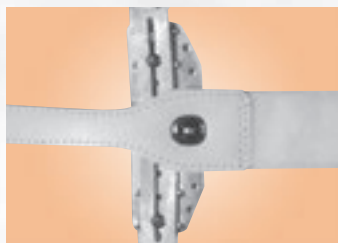
HYPEREXTENSION TLSO WITH SWIVEL STERNAL PAD & DOT FASTENER CLOSURE

Model L-25A is the same as model Q-25A except a Dot Fastener closure replaces the Quick Release closure.

NOTE: Please see size chart on preceding page.

- Swivel Sternal Pad
- Adjustable Lateral Uprights
- DOT Fastener Closure

ADJUSTABLE	
Order No.	Size
L-25A-XS	X-Small
L-25A-S	Small
L-25A-M	Medium
L-25A-L	Large
L-25A-XL	X-Large
L-25A-C	Custom



Dot Fastener Closure



MODEL W-25A

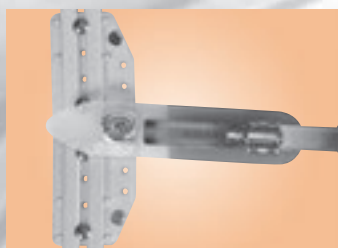
HYPEREXTENSION TLSO WITH SWIVEL STERNAL PAD & WORM GEAR CLOSURE

Model W-25A is the same as Model Q-25A except a Worm Gear closure replaces the Quick Release closure.

NOTE: Please see size chart on preceding page.

- Swivel Sternal Pad
- Adjustable Lateral Uprights
- Worm Gear Closure

ADJUSTABLE	
Order No.	Size
W-25A-XS	X-Small
W-25A-S	Small
W-25A-M	Medium
W-25A-L	Large
W-25A-XL	X-Large
W-25A-C	Custom



Worm Gear Closure



NON-ADJUSTABLE ORDER NUMBERS

NON-ADJUSTABLE WITH DOT FASTENER CLOSURE	
Order No.	Size
L-25-XS	X-Small
L-25-S	Small
L-25-M	Medium
L-25-L	Large
L-25-XL	X-Large
L-25-C	Custom

NON-ADJUSTABLE WITH WORM GEAR CLOSURE	
Order No.	Size
W-25-XS	X-Small
W-25-S	Small
W-25-M	Medium
W-25-L	Large
W-25-XL	X-Large
W-25-C	Custom

NOTE: Non-adjustable lateral uprights are available in the following lengths: 4-1/2", 5-1/4", 6", 6-3/4", 7-1/2", 8-1/4", 9", and 9-3/4". Please specify the lateral upright length you desire when ordering.

HYPEREXTENSION TLSO'S CONTINUED

The Becker Orthopedic Spinal System (BOSS) is a series of modular hyperextension braces utilizing serrated discs on the lateral uprights to make angular adjustments of the thoracic and pelvic modules.

MODEL Q-26A HYPEREXTENSION TLSO WITH STATIONARY STERNAL PAD & QUICK RELEASE CLOSURE



Model Q-26A utilizes a stationary sternal pad instead of the swivel type.

Order No.	Size
Q-26A-XS	X-Small
Q-26A-S	Small
Q-26A-M	Medium
Q-26A-L	Large
Q-26A-XL	X-Large
Q-26A-C	Custom



Stationary Sternal Pad



Adjustable Lateral Uprights



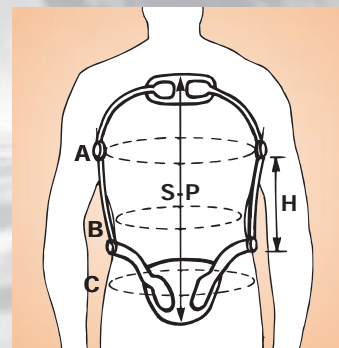
Quick Release Closure

NOTE: Our hyperextension TLSO's with Quick Release closures are not available with non-adjustable lateral uprights.

SIZE CHART

Size	A	B	C	H	S-P
X-Small	28" - 30"	25" - 28"	28" - 31"	4-3/8" - 7-1/4"	16" - 17"
Small	30" - 33"	28" - 31"	31" - 34"	4-3/8" - 7-1/4"	17" - 18"
Medium	33" - 36"	31" - 34"	34" - 37"	6" - 8-1/4"	18" - 20"
Large	36" - 40"	34" - 37"	37" - 40"	6-5/8" - 9-3/4"	19" - 21"
X-Large	40" - 44"	37" - 40"	40" - 44"	6-5/8" - 9-3/4"	20" - 22"
Custom	Please Specify Measurements				

NOTE: The superior border of the sternal pad should be located 1/2" below the sternal notch. The inferior border of the suprapubic pad should be 1/2" superior to the symphysis pubis.



MODEL L-26A HYPEREXTENSION TLSO WITH STATIONARY STERNAL PAD & DOT FASTENER CLOSURE

Model L-26A is the same as Model Q-26A except a Dot Fastener closure replaces the Quick Release closure.

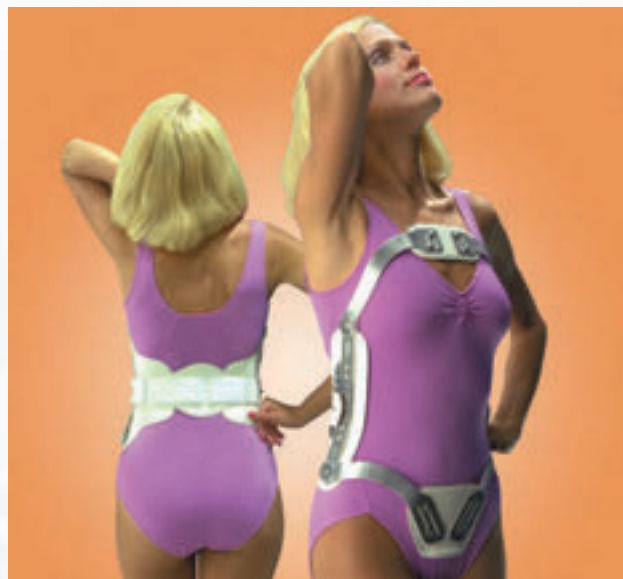
NOTE: Please see size chart on preceding page.

- Stationary Sternal Pad
- Adjustable Lateral Uprights
- DOT Fastener Closure

ADJUSTABLE	
Order No.	Size
L-26A-XS	X-Small
L-26A-S	Small
L-26A-M	Medium
L-26A-L	Large
L-26A-XL	X-Large
L-26A-C	Custom



Dot Fastener Closure



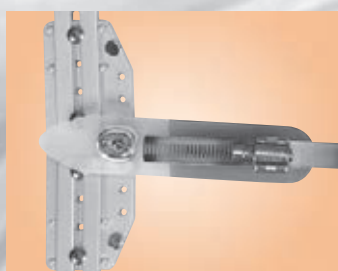
MODEL W-26A HYPEREXTENSION TLSO WITH STATIONARY STERNAL PAD & WORM GEAR CLOSURE

Model W-26A is the same as Model Q-26A except a Worm Gear closure replaces the Quick Release closure.

NOTE: Please see size chart on preceding page.

- Stationary Sternal Pad
- Adjustable Lateral Uprights
- Worm Gear Closure

ADJUSTABLE	
Order No.	Size
W-26A-XS	X-Small
W-26A-S	Small
W-26A-M	Medium
W-26A-L	Large
W-26A-XL	X-Large
W-26A-C	Custom



Worm Gear Closure



NON-ADJUSTABLE ORDER NUMBERS

NON-ADJUSTABLE WITH DOT FASTENER CLOSURE	
Order No.	Size
L-26-XS	X-Small
L-26-S	Small
L-26-M	Medium
L-26-L	Large
L-26-XL	X-Large
L-26-C	Custom

NON-ADJUSTABLE WITH WORM GEAR CLOSURE	
Order No.	Size
W-26-XS	X-Small
W-26-S	Small
W-26-M	Medium
W-26-L	Large
W-26-XL	X-Large
W-26-C	Custom

NOTE: Non-adjustable lateral uprights are available in the following lengths: 4-1/2", 5-1/4", 6", 6-3/4", 7-1/2", 8-1/4", 9", and 9-3/4". Please specify the lateral upright length you desire when ordering.

HYPEREXTENSION TLSO'S CONTINUED

The Becker Orthopedic Spinal System (BOSS) is a series of modular hyperextension braces utilizing serrated discs on the lateral uprights to make angular adjustments of the thoracic and pelvic modules.

MODEL Q-27A

HYPEREXTENSION TLSO WITH SWIVEL STERNAL PAD, PELVIC BAR & QUICK RELEASE CLOSURE

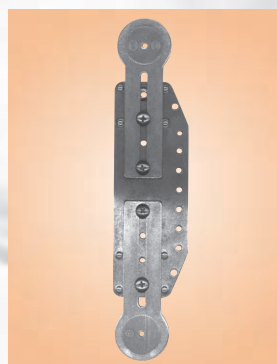


Model Q-27A is provided with a pelvic bar which reduces pressure on the bladder.

Order No.	Size
Q-27A-XS	X-Small
Q-27A-S	Small
Q-27A-M	Medium
Q-27A-L	Large
Q-27A-XL	X-Large
Q-27A-C	Custom



Swivel Sternal Pad



Adjustable Lateral Uprights



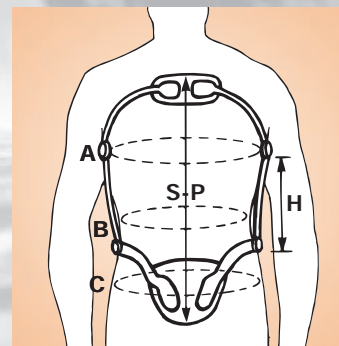
Quick Release Closure

NOTE: Our hyperextension TLSO's with Quick Release closures are not available with non-adjustable lateral uprights.

SIZE CHART

Size	A	B	C	H	S-P
X-Small	28" - 30"	25" - 28"	28" - 31"	4-3/8" - 7-1/4"	16" - 17"
Small	30" - 33"	28" - 31"	31" - 34"	4-3/8" - 7-1/4"	17" - 18"
Medium	33" - 36"	31" - 34"	34" - 37"	6" - 8-1/4"	18" - 20"
Large	36" - 40"	34" - 37"	37" - 40"	6-5/8" - 9-3/4"	19" - 21"
X-Large	40" - 44"	37" - 40"	40" - 44"	6-5/8" - 9-3/4"	20" - 22"
Custom	Please Specify Measurements				

NOTE: The superior border of the sternal pad should be located 1/2" below the sternal notch. The inferior border of the suprapubic pad should be 1/2" superior to the symphysis pubis.



MODEL L-27A

HYPEREXTENSION TLSO WITH SWIVEL STERNAL PAD, PELVIC BAR & DOT FASTENER CLOSURE

Model L-27A is the same as Model Q-27A except a Dot Fastener closure replaces the Quick Release closure.

NOTE: Please see size chart on preceding page.

- Swivel Sternal Pad
- Adjustable Lateral Uprights
- Pelvic Bar
- DOT Fastener Closure

ADJUSTABLE	
Order No.	Size
L-27A-XS	X-Small
L-27A-S	Small
L-27A-M	Medium
L-27A-L	Large
L-27A-XL	X-Large
L-27A-C	Custom



Dot Fastener Closure



MODEL W-27A

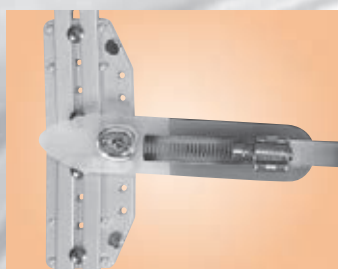
HYPEREXTENSION TLSO WITH SWIVEL STERNAL PAD, PELVIC BAR & WORM GEAR CLOSURE

Model W-27A is the same as Model Q-27A except a Worm Gear closure replaces the Quick Release closure.

NOTE: Please see size chart on preceding page.

- Swivel Sternal Pad
- Adjustable Lateral Uprights
- Pelvic Bar
- Worm Gear Closure

ADJUSTABLE	
Order No.	Size
W-27A-XS	X-Small
W-27A-S	Small
W-27A-M	Medium
W-27A-L	Large
W-27A-XL	X-Large
W-27A-C	Custom



Worm Gear Closure



NON-ADJUSTABLE ORDER NUMBERS

NON-ADJUSTABLE WITH DOT FASTENER CLOSURE	
Order No.	Size
L-27-XS	X-Small
L-27-S	Small
L-27-M	Medium
L-27-L	Large
L-27-XL	X-Large
L-27-C	Custom

NON-ADJUSTABLE WITH WORM GEAR CLOSURE	
Order No.	Size
W-27-XS	X-Small
W-27-S	Small
W-27-M	Medium
W-27-L	Large
W-27-XL	X-Large
W-27-C	Custom

NOTE: Non-adjustable lateral uprights are available in the following lengths: 4-1/2", 5-1/4", 6", 6-3/4", 7-1/2", 8-1/4", 9", and 9-3/4". Please specify the lateral upright length you desire when ordering.

HYPEREXTENSION TLSO'S CONTINUED

The Becker Orthopedic Spinal System (BOSS) is a series of modular hyperextension braces utilizing serrated discs on the lateral uprights to make angular adjustments of the thoracic and pelvic modules.

MODEL Q-29A

HYPEREXTENSION TLSO

WITH DELTOPECTORAL PADS & QUICK RELEASE CLOSURE



Model Q-29A utilizes deltopectoral pads designed for patients unable to tolerate pressure on the sternum.

Order No.	Size
Q-29A-XS	X-Small
Q-29A-S	Small
Q-29A-M	Medium
Q-29A-L	Large
Q-29A-XL	X-Large
Q-29A-C	Custom



Adjustable
Deltopectoral Pads



Adjustable Lateral
Uprights



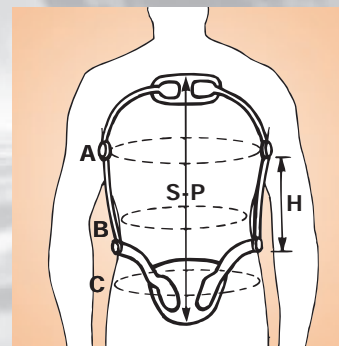
Quick Release Closure

NOTE: Our hyperextension TLSO's with Quick Release closures are not available with non-adjustable lateral uprights.

SIZE CHART

Size	A	B	C	H	S-P
X-Small	28" - 30"	25" - 28"	28" - 31"	4-3/8" - 7-1/4"	16" - 17"
Small	30" - 33"	28" - 31"	31" - 34"	4-3/8" - 7-1/4"	17" - 18"
Medium	33" - 36"	31" - 34"	34" - 37"	6" - 8-1/4"	18" - 20"
Large	36" - 40"	34" - 37"	37" - 40"	6-5/8" - 9-3/4"	19" - 21"
X-Large	40" - 44"	37" - 40"	40" - 44"	6-5/8" - 9-3/4"	20" - 22"
Custom	Please Specify Measurements				

NOTE: The superior border of the sternal pad should be located 1/2" below the sternal notch. The inferior border of the suprapubic pad should be 1/2" superior to the symphysis pubis.



MODEL L-29A HYPEREXTENSION TLSO WITH DELTOPECTORAL PADS & DOT FASTENER CLOSURE

Model L-29A is the same as Model Q-29A except a Dot Fastener closure replaces the Quick Release closure.

NOTE: Please see size chart on preceding page.

- Adjustable Deltopectoral Pads
- Adjustable Lateral Uprights
- DOT Fastener Closure

ADJUSTABLE	
Order No.	Size
L-29A-XS	X-Small
L-29A-S	Small
L-29A-M	Medium
L-29A-L	Large
L-29A-XL	X-Large
L-29A-C	Custom



Dot Fastener Closure



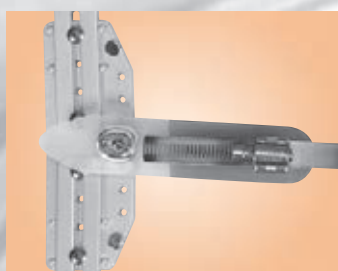
MODEL W-29A HYPEREXTENSION TLSO WITH DELTOPECTORAL PADS & WORM GEAR CLOSURE

Model W-29A is the same as Model Q-29A except a Worm Gear closure replaces the Quick Release closure.

NOTE: Please see size chart on preceding page.

- Adjustable Deltopectoral Pads
- Adjustable Lateral Uprights
- Worm Gear Closure

ADJUSTABLE	
Order No.	Size
W-29A-XS	X-Small
W-29A-S	Small
W-29A-M	Medium
W-29A-L	Large
W-29A-XL	X-Large
W-29A-C	Custom



Worm Gear Closure



NON-ADJUSTABLE ORDER NUMBERS

NON-ADJUSTABLE WITH DOT FASTENER CLOSURE	
Order No.	Size
L-29-XS	X-Small
L-29-S	Small
L-29-M	Medium
L-29-L	Large
L-29-XL	X-Large
L-29-C	Custom

NON-ADJUSTABLE WITH WORM GEAR CLOSURE	
Order No.	Size
W-29-XS	X-Small
W-29-S	Small
W-29-M	Medium
W-29-L	Large
W-29-XL	X-Large
W-29-C	Custom

NOTE: Non-adjustable lateral uprights are available in the following lengths: 4-1/2", 5-1/4", 6", 6-3/4", 7-1/2", 8-1/4", 9", and 9-3/4". Please specify the lateral upright length you desire when ordering.

HYPEREXTENSION TLSO'S CONTINUED

The Becker Orthopedic Spinal System (BOSS) is a series of modular hyperextension braces utilizing serrated discs on the lateral uprights to make angular adjustments of the thoracic and pelvic modules.

MODEL Q-30A

HYPEREXTENSION TLSO WITH DELTOPECTORAL PADS, PELVIC BAR & QUICK RELEASE CLOSURE

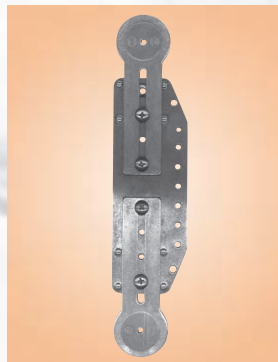


Model Q-30A utilizes a padded pelvic bar and deltopectoral pads for patients who can not tolerate pressure on the bladder and sternum.

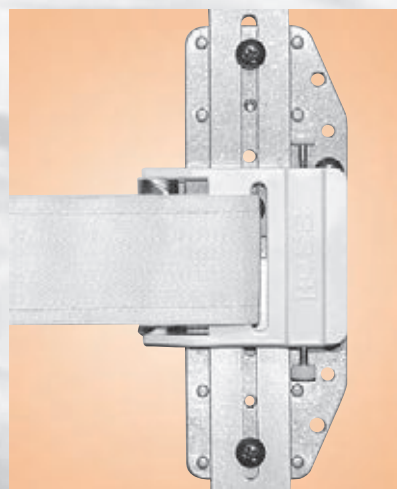
Order No.	Size
Q-30A-XS	X-Small
Q-30A-S	Small
Q-30A-M	Medium
Q-30A-L	Large
Q-30A-XL	X-Large
Q-30A-C	Custom



Adjustable
Deltopectoral Pads



Adjustable Lateral
Uprights



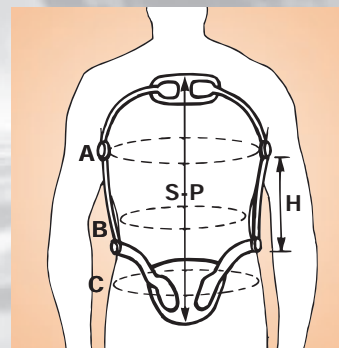
Quick Release Closure

NOTE: Our hyperextension TLSO's with Quick Release closures are not available with non-adjustable lateral uprights.

SIZE CHART

Size	A	B	C	H	S-P
X-Small	28" - 30"	25" - 28"	28" - 31"	4-3/8" - 7-1/4"	16" - 17"
Small	30" - 33"	28" - 31"	31" - 34"	4-3/8" - 7-1/4"	17" - 18"
Medium	33" - 36"	31" - 34"	34" - 37"	6" - 8-1/4"	18" - 20"
Large	36" - 40"	34" - 37"	37" - 40"	6-5/8" - 9-3/4"	19" - 21"
X-Large	40" - 44"	37" - 40"	40" - 44"	6-5/8" - 9-3/4"	20" - 22"
Custom	Please Specify Measurements				

NOTE: The superior border of the sternal pad should be located 1/2" below the sternal notch. The inferior border of the suprapubic pad should be 1/2" superior to the symphysis pubis.



MODEL L-30A

HYPEREXTENSION TLSO WITH DELTOPECTORAL PADS, PELVIC BAR & DOT FASTENER CLOSURE

Model L-30A is the same as Model Q-30A except a Dot Fastener closure replaces the Quick Release closure.

NOTE: Please see size chart on preceding page.

- Adjustable Deltopectoral Pads
- Adjustable Lateral Uprights
- Padded Pelvic Bar
- DOT Fastener Closure

ADJUSTABLE	
Order No.	Size
L-30A-XS	X-Small
L-30A-S	Small
L-30A-M	Medium
L-30A-L	Large
L-30A-XL	X-Large
L-30A-C	Custom



Dot Fastener Closure



MODEL W-30A

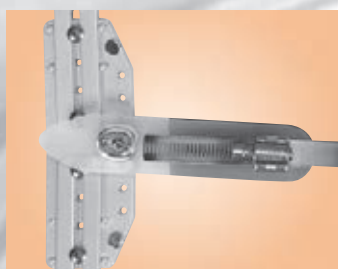
HYPEREXTENSION TLSO WITH DELTOPECTORAL PADS, PELVIC BAR & WORM GEAR CLOSURE

Model W-30A is the same as Model Q-30A except a Worm Gear closure replaces the Quick Release closure.

NOTE: Please see size chart on preceding page.

- Adjustable Deltopectoral Pads
- Adjustable Lateral Uprights
- Padded Pelvic Bar
- Worm Gear Closure

ADJUSTABLE	
Order No.	Size
W-30A-XS	X-Small
W-30A-S	Small
W-30A-M	Medium
W-30A-L	Large
W-30A-XL	X-Large
W-30A-C	Custom



Worm Gear Closure



NON-ADJUSTABLE ORDER NUMBERS

NON-ADJUSTABLE WITH DOT FASTENER CLOSURE	
Order No.	Size
L-30-XS	X-Small
L-30-S	Small
L-30-M	Medium
L-30-L	Large
L-30-XL	X-Large
L-30-C	Custom

NON-ADJUSTABLE WITH WORM GEAR CLOSURE	
Order No.	Size
W-30-XS	X-Small
W-30-S	Small
W-30-M	Medium
W-30-L	Large
W-30-XL	X-Large
W-30-C	Custom

NOTE: Non-adjustable lateral uprights are available in the following lengths: 4-1/2", 5-1/4", 6", 6-3/4", 7-1/2", 8-1/4", 9", and 9-3/4". Please specify the lateral upright length you desire when ordering.